

Linkfield Street
Redhill
Surrey

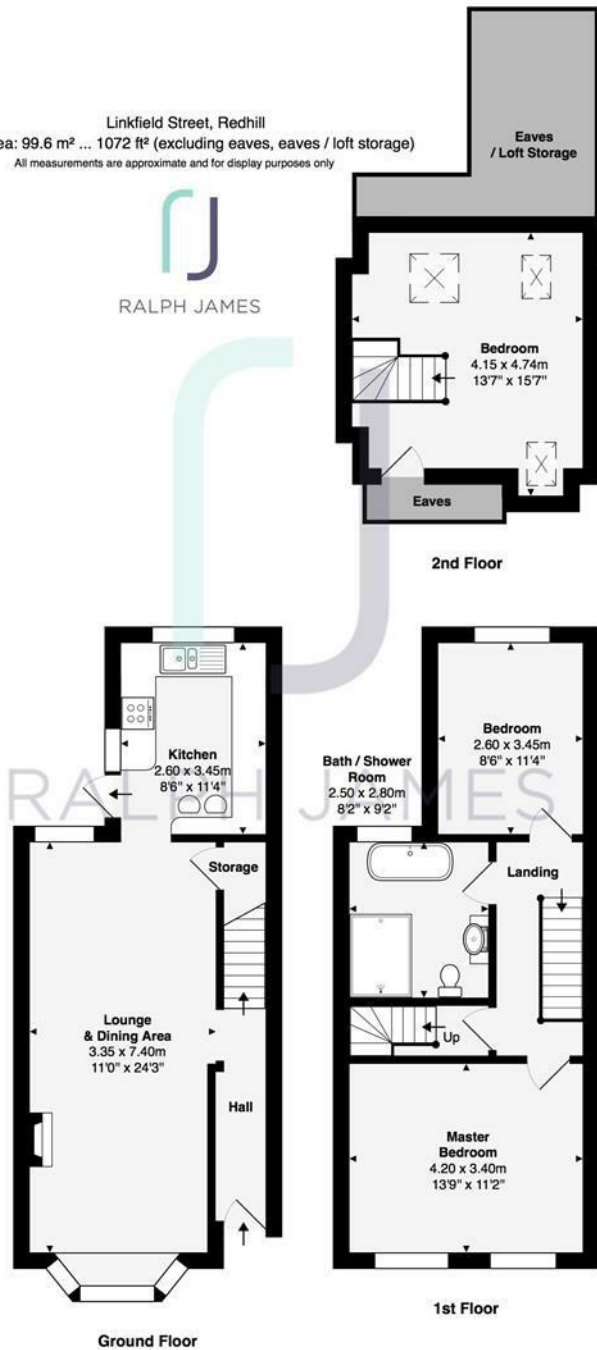
Guide Price
£500,000 - £525,000



RALPH JAMES

FLOOR PLANS

Linkfield Street, Redhill
 Total Area: 99.6 m² ... 1072 ft² (excluding eaves, eaves / loft storage)
 All measurements are approximate and for display purposes only



IN A NUTSHELL



Private & easy to maintain garden



Three spacious bedrooms



Bright & spacious open plan living



Stylish family bathroom



Chic & modern kitchen



Street parking



WHAT'S GREAT?

Guide Price £500,000 - £525,000

This stunning Victorian home has been beautifully decorated and dressed by the current owners, brimming with characteristic charm and modern interior design. Homes around here are in demand as buyers moving from London feel the similarity in the roads and property styles are uncanny. An area perfect for young professionals and growing families.

As soon as you step foot into the gorgeous home you can't help but admire the sophisticated style, light and size. You really get the best of the old and the new. As you walk through to the lounge and dining room at the front of the house you are greeted by contemporary and original features such as the cast iron fireplace and high ceilings along with the large bay sash window flooding this space with natural light. The ideal room to completely relax and unwind in or entertain guests when they come over to visit.

At the back of the house, you have a separate kitchen with underfloor heating, solid Quartz worktops and sleek cupboards with plenty of storage.

Through the back door, you head out to the easy to maintain paved garden, which will be ideal for anyone who does not have the time to mow the lawn but does have plenty of time to host summer BBQ's with family and friends.

Upstairs there are two generously sized double bedrooms and a luxurious family bathroom with underfloor heating, a dream on those crisp winter mornings. Following the stairs up to the second floor there is another great sized bedroom which could also be a perfect space for an office with the views from the Velux windows looking over rooftops of other Victorian houses while you are working from home.

Linkfield Street is within easy walking distance to Redhill train station and Reigate high street, surrounded by convenient shops for your daily needs. At the end of the road, you have the Deli on The Hill selling fresh coffees and homemade pastries.



Ashley likes it because....

"This house is one of those gorgeous spaces where you're able to move in with minimal hassle and settle in straight away. It's gorgeous finish from top to bottom has adapted this space to create a warm and welcoming home full of character."

SELLER'S SECRET

"We have loved living here for the past four years. Initially what attracted us to the house was the combination of old and new but over the years we have come to love the location. It is perfect for the daily commute into London; being able to walk into Redhill or Reigate for shopping or a coffee with friends; and the local area has a real community feel. In fact, we love the location so much so we hope our next home is very close! We will certainly still visit the local Deli on the Hill for our weekend coffee and pastry."

CLOSE TO HOME

Redhill Train Station 0.4m

Reigate High Street 1.3m

Donyngs Gymnasium 0.3m

Gatwick Airport 5.7m

St Joseph's School 0.3m

St Bedes School 1.0m

Deli on The Hill 0.07m

Redhill Common 0.3m

The Warwick School 0.8m

Wray Common School

To buy or not to buy...

RALPH JAMES



39 High Street | Redhill | RH1 1RX | 01737 765555
admin@ralphjames.co.uk | www.ralphjames.co.uk

